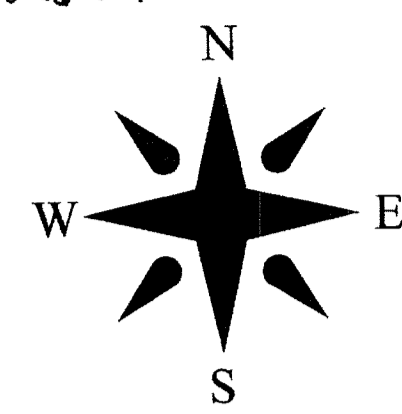
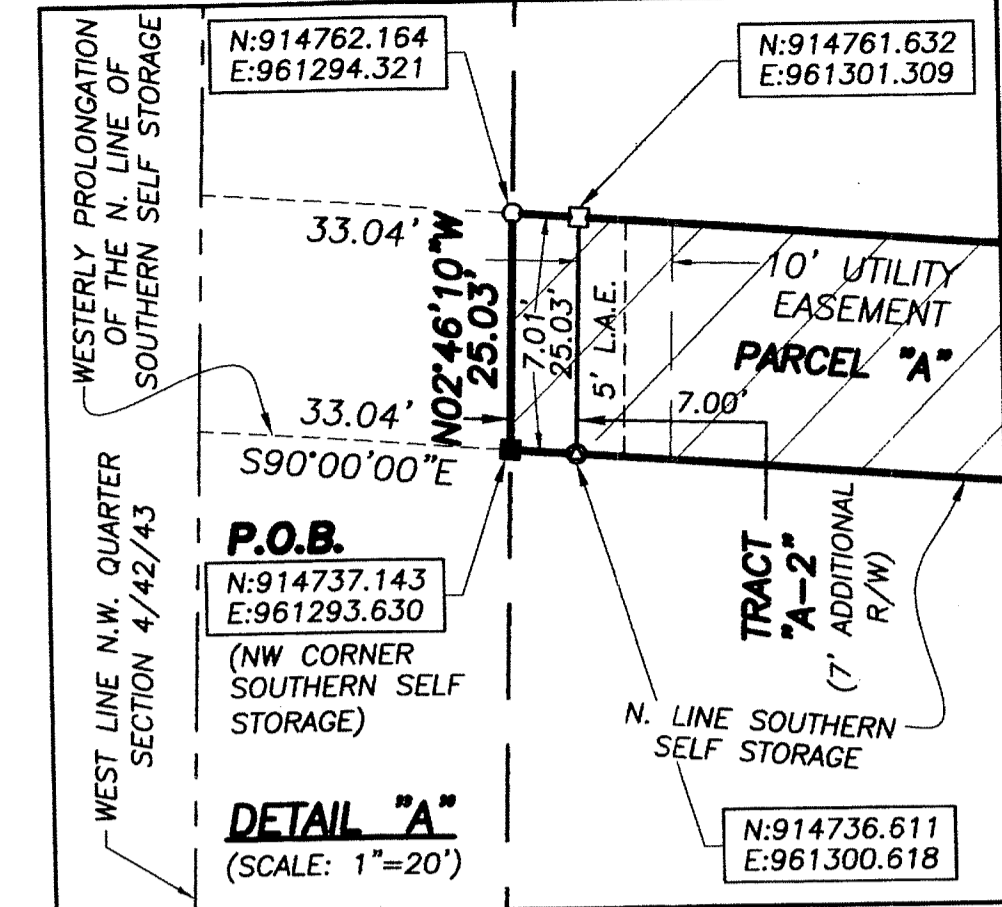


5826.001



JUNO LANDING

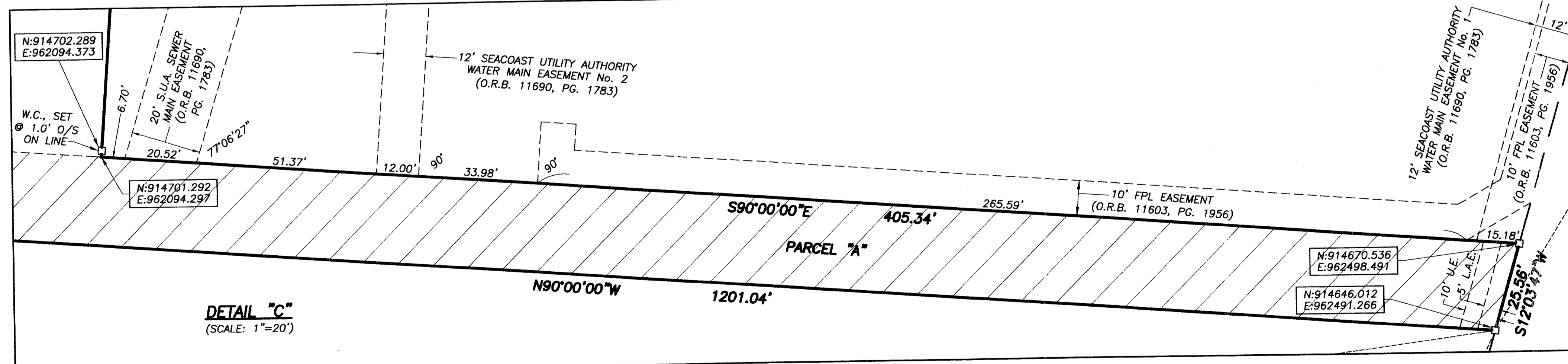
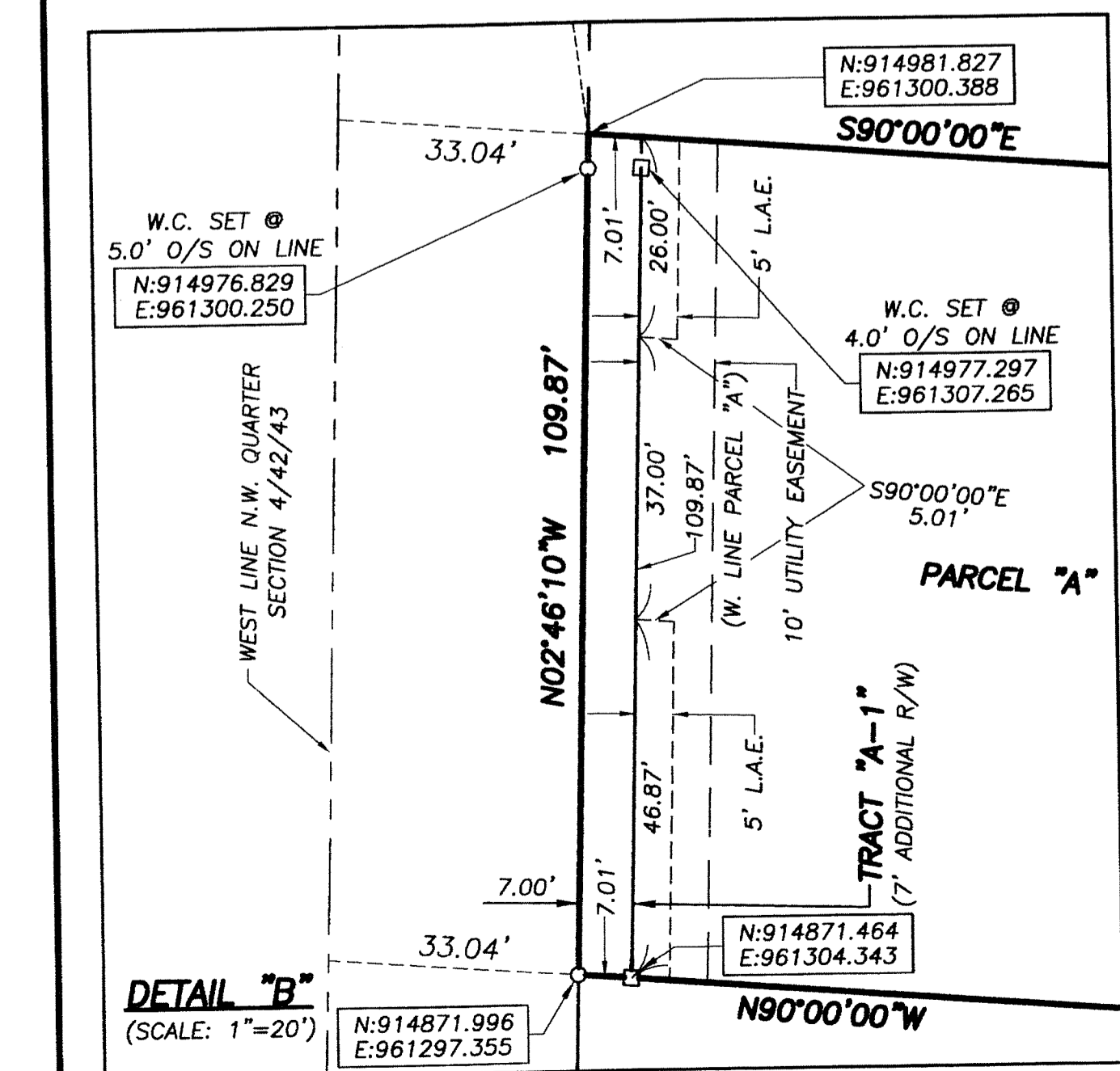
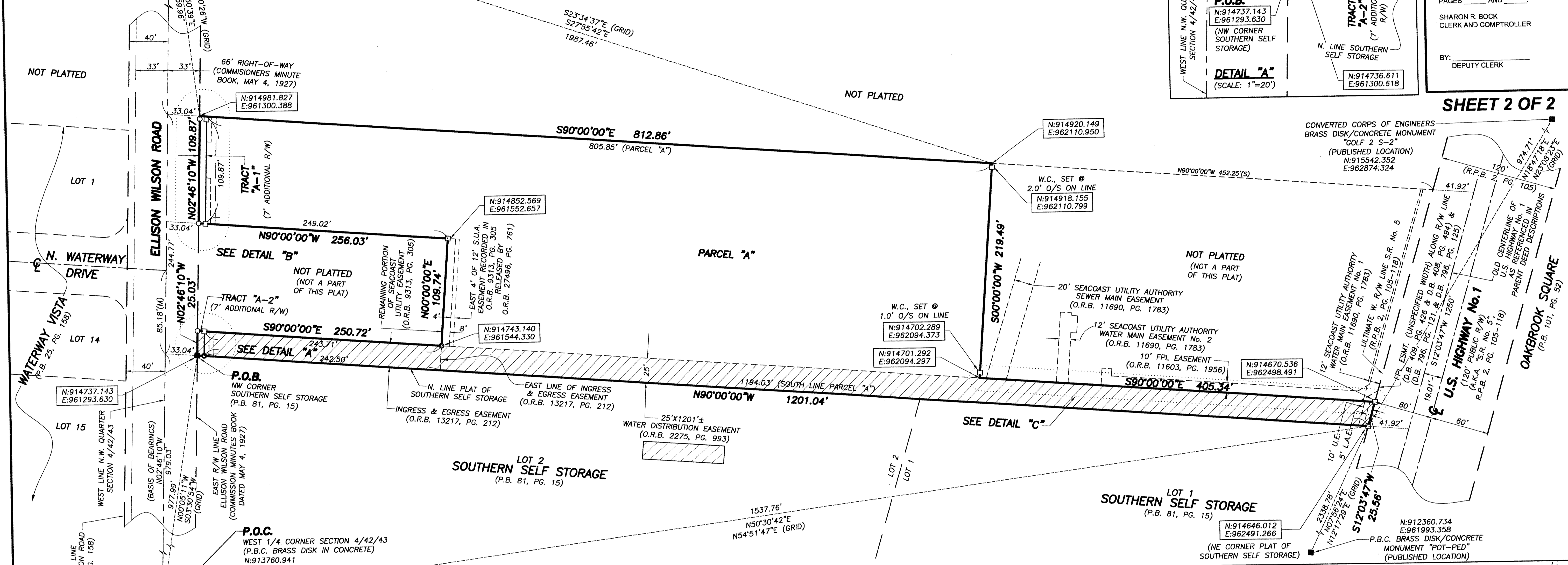
LYING IN SECTION 4, TOWNSHIP 42 SOUTH, RANGE 43 EAST, PALM BEACH COUNTY, FLORIDA.



142

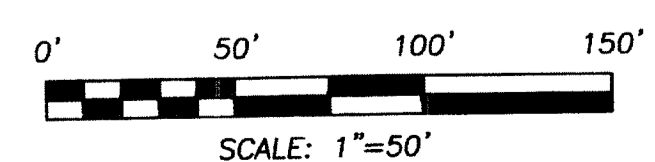
STATE OF FLORIDA
COUNTY OF PALM BEACH
THIS PLAT WAS FILED FOR
RECORD AT _____ M.
THIS _____ DAY OF
A.D. 20____ AND DULY RECORDED
IN PLAT BOOK _____ ON
PAGES _____ AND _____
SHARON R. BOCK
CLERK AND COMPTROLLER
BY: _____
DEPUTY CLERK

SHEET 2 OF 2



ABBREVIATIONS/LEGEND

- = 4"x4" CONCRETE MONUMENT FOUND (NO IDENTIFICATION)
- = 4"x4" CONCRETE MONUMENT WITH DISK STAMPED "P.R.M. LB #4569"
- = SET 5/8" IRON ROD & CAP STAMPED "WALLACE LB #4569"
- = FOUND IRON ROD AND CAP (AS NOTED)
- ⊙ = SET MAG NAIL & DISK STAMPED "P.R.M. LB #4569"
- C/L = CENTERLINE
- P.B.C. = PALM BEACH COUNTY
- P.R.M. = PERMANENT REFERENCE MONUMENT
- N = NORTHING
- E = EASTING
- A.K.A. = ALSO KNOWN AS
- D.B. = DEED BOOK
- ESMT. = EASEMENT
- L.A.E. = LIMITED ACCESS EASEMENT
- L.B. = LICENSED BUSINESS
- O.R.B. = OFFICIAL RECORDS BOOK
- O/S = OFFSET
- P.B. = PLAT BOOK
- PG. = PAGE
- R.P.B. = ROAD PLAT BOOK
- R/W = RIGHT-OF-WAY
- S.U.A. = SEACOAST UTILITY AUTHORITY
- U.E. = UTILITY EASEMENT
- W.C. = WITNESS CORNER



JUNO LANDING

WALLACE HARVEY
CORP. LICENSED BUSINESS # 4498
5555 VILLAGE BOULEVARD, WEST PALM BEACH, FLORIDA 33407 (954) 940-4551

FIELD:	JOB No.: 93-1077.15	F.B.	PG.
OFFICE: R.C.	DATE: DEC. 2014	DWG. No.: 93-1077-7	
CK'D:	REF.: 93-1077-7.DWG	SHEET 2 OF 2	